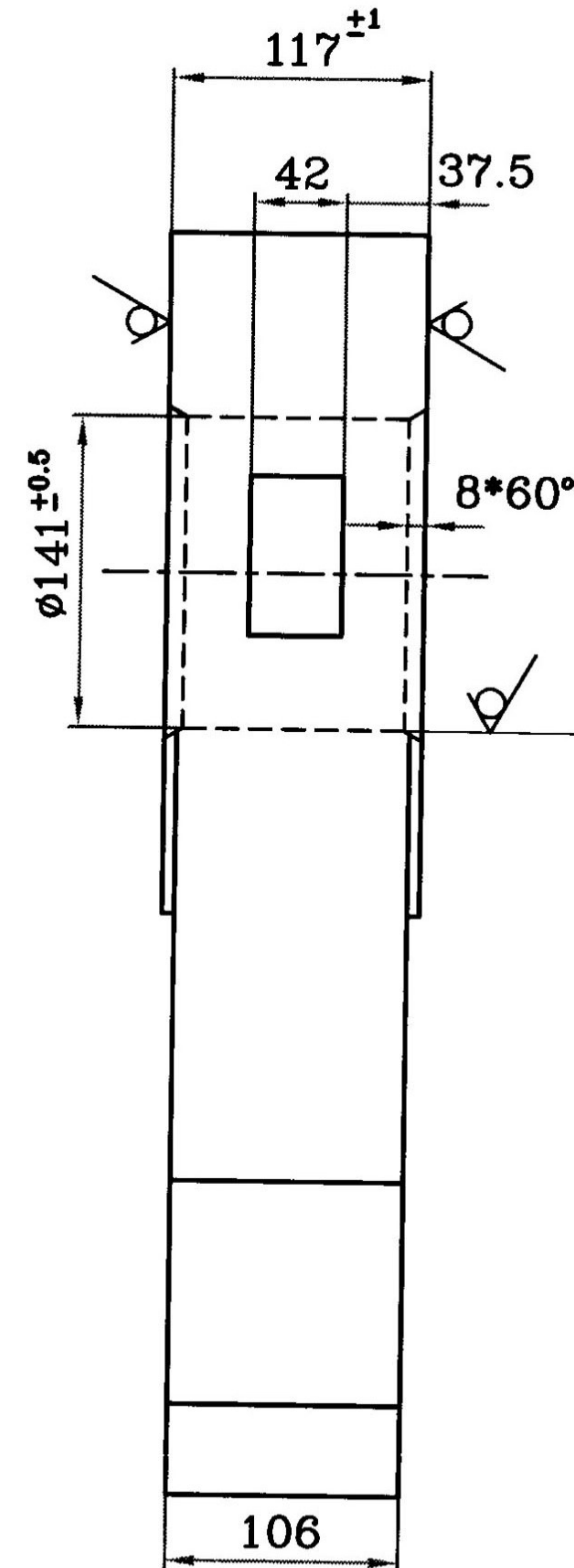
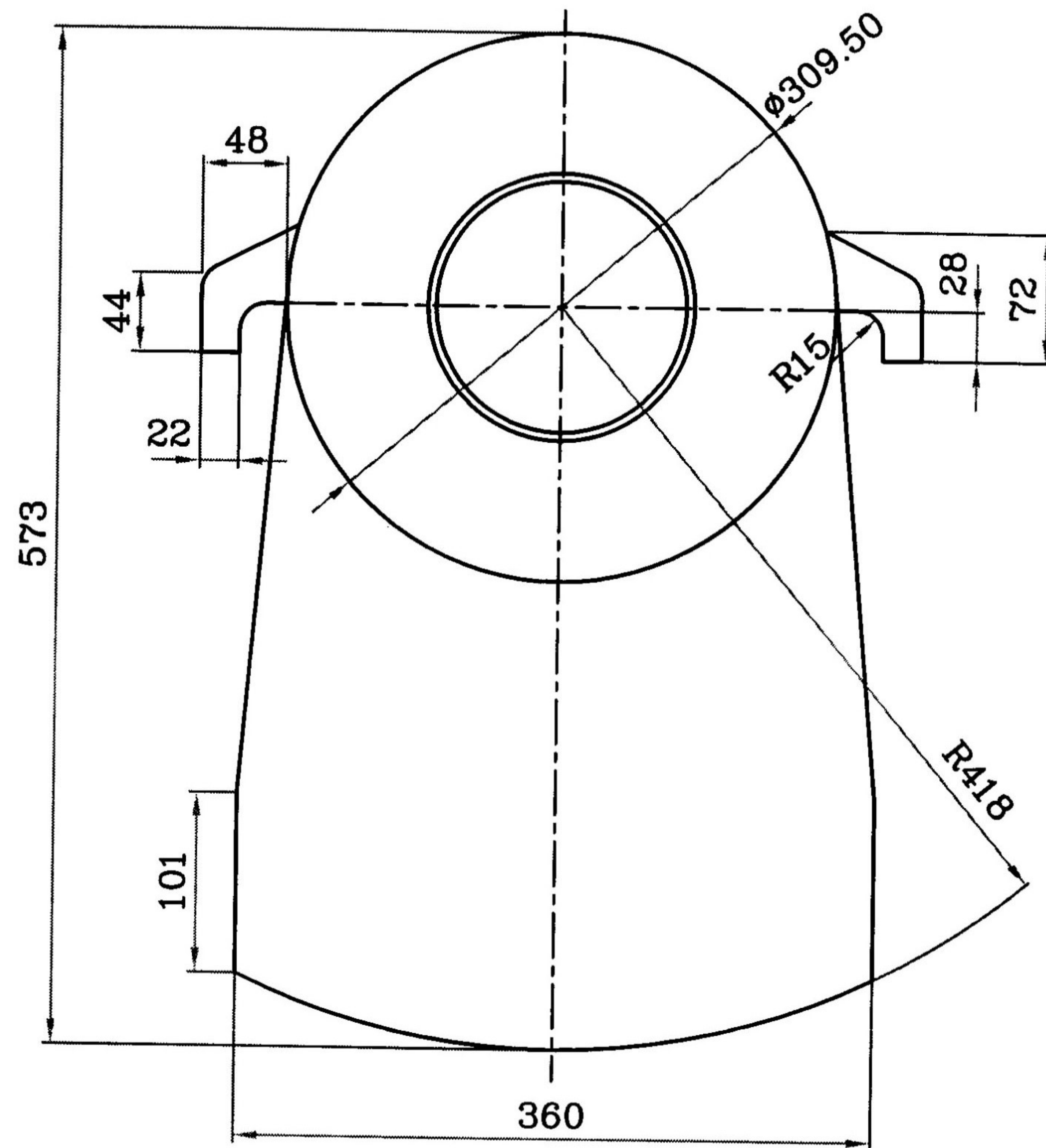


Sec. A-A

تیغه سرند سنگ شکن آهک 1400mm
جنس : 1.3401

O&K 1013620

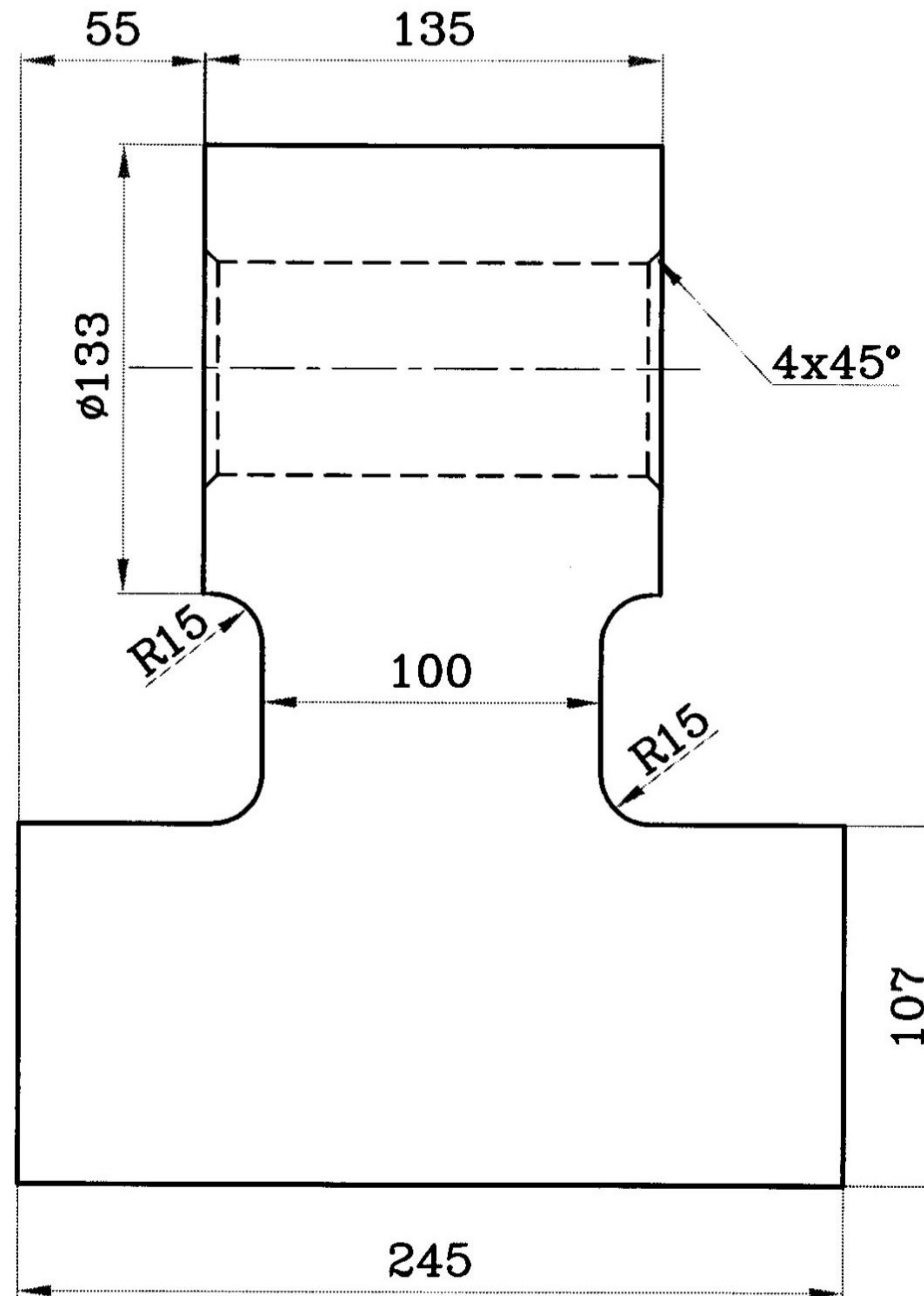
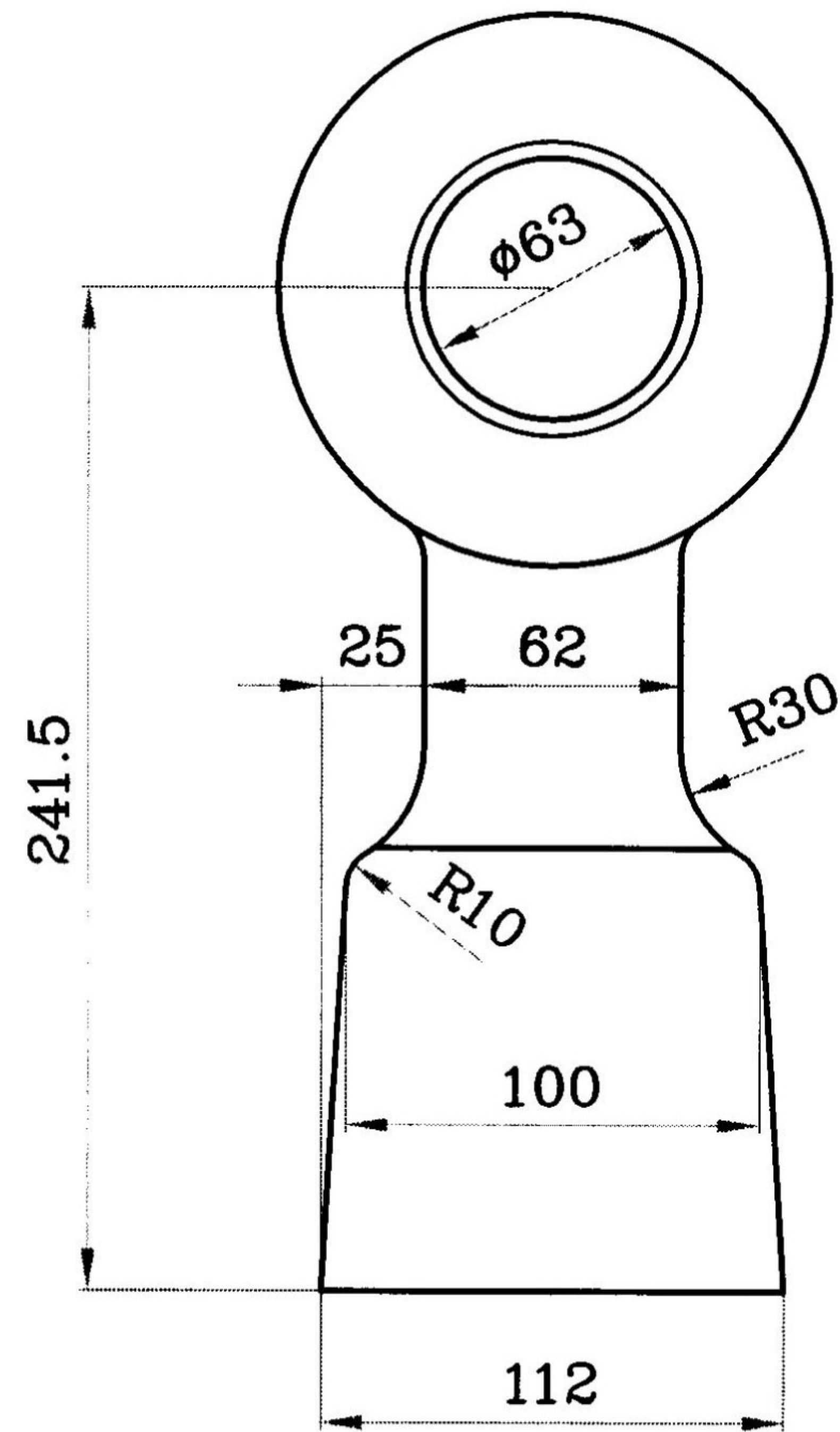
	Name:	Date:	Company: <i>QAEN CEMENT CO.</i>	Scale:
Prep. By:	Baghaie Fard	73/8/23		
Drawn By:	Ramezani	79/10/25		
Checked By:	Moosavi			
Drawing No: <i>CR/02/002</i>			Part Name: <i>GRATE BAR</i>	Mat:
acc. to:			Ref. Drawing	Weight: 39
				Qan: 112



جنس : 1.3401 + 0.5%MO

چکش سنگ شکن آهک

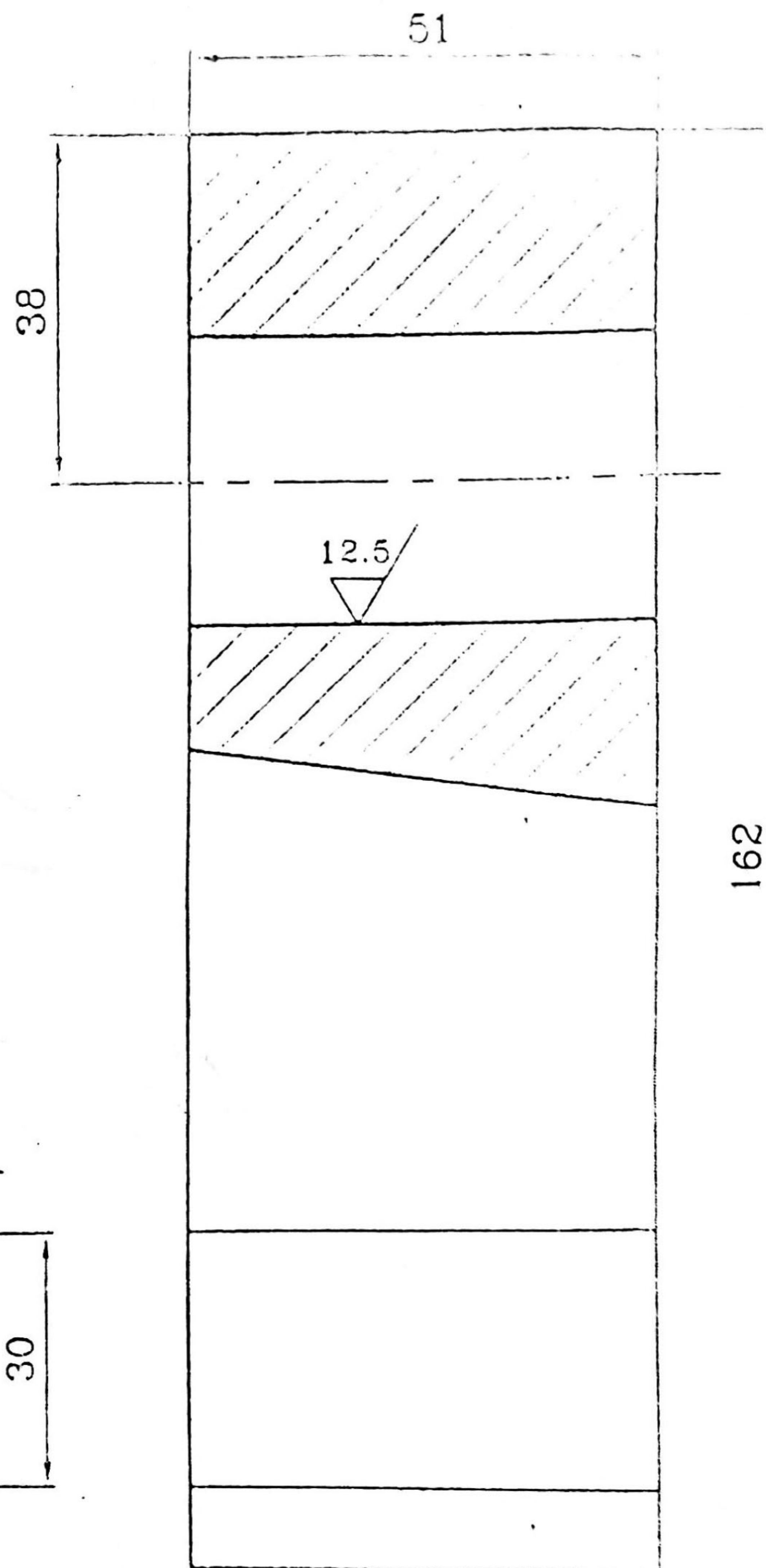
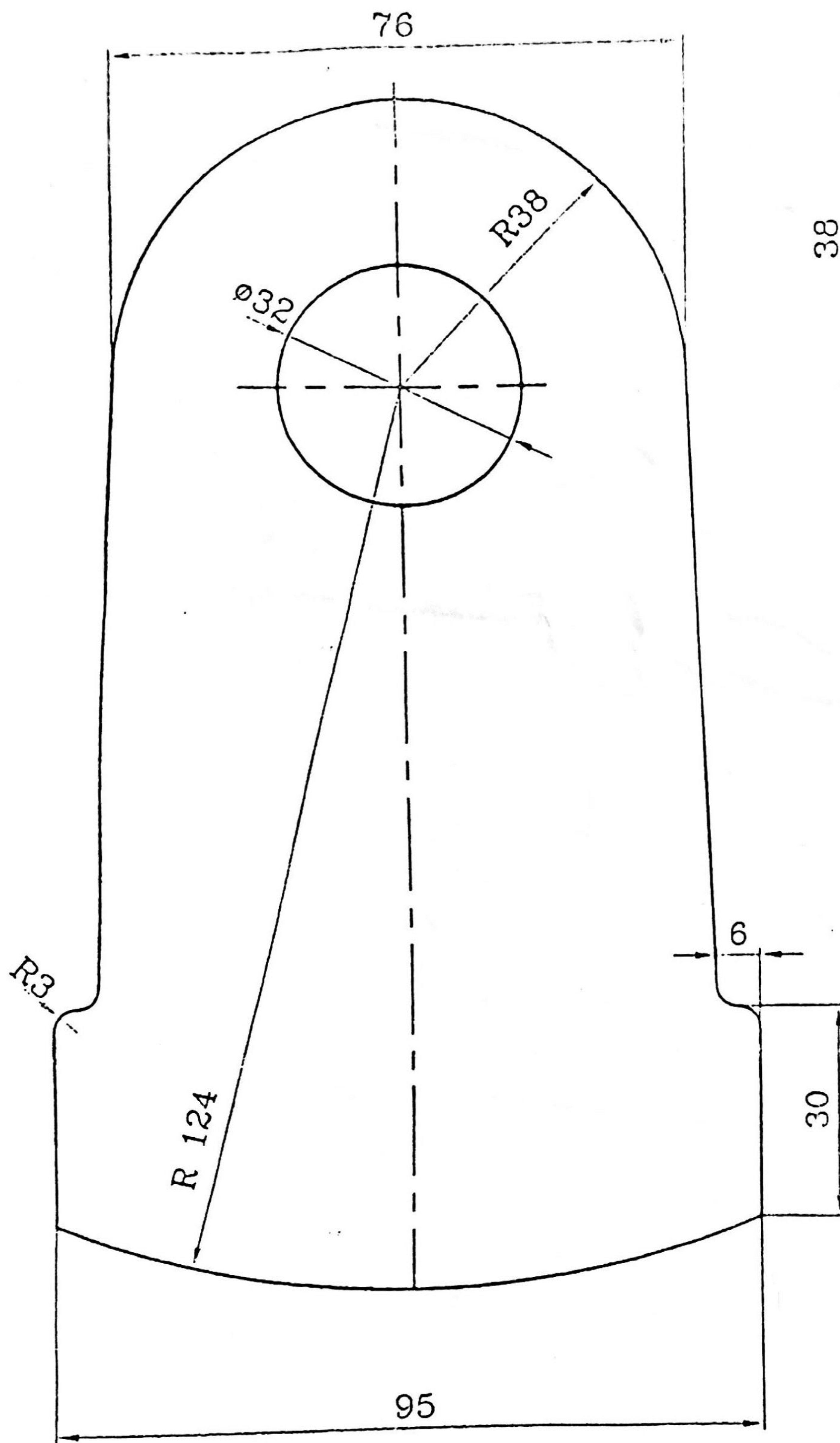
Name:		Date:	Company: <i>QAEN CEMENT CO.</i>		REV		
Prep. By:	Ramezani	79/10/24			NO	DATE	sign
Drawn By:	Nasrollahi	87/10/3					
Checked By:	Hojabri		Part Name: <i>HAMMER</i>			87/10/3	
Drawing No: <i>CR/02/001</i>							
Scale:		Mat:	Weight: 135kg	Qan: 84			



جنس : 1.3401 + 0.5%MO

چکش سنگ شکن ۱۲۰ تن

Name:	Date:	Company:	Scale:
Prep. By: MAYAMU	81/3/20	QAEN CEMENT CO.	
Drawn By: Nasrollahi	87/10/24		
Checked By: Hojabri			
Drawing No:	Part Name:	Mat:	
CR120/3/7	HAMMER	Weight:	
acc. to:	Ref. Drawing	Qan:	1



چکش سنگ شکن نمونه گیری

جنس : 1.3401 + 0.5%MO

Drawn	Nasrollahi	DATE	95/2/4	Company	QAEN CEMENT CO.
Checked	Gholame			Part Name	HAMMER
Approved	Kirzazadeh				For Sampling Crusher
Drawing No:	SA/03/001-1				
Scale:	Mat:	Weight:	4.6	Qty:	40

282.4.20.003263