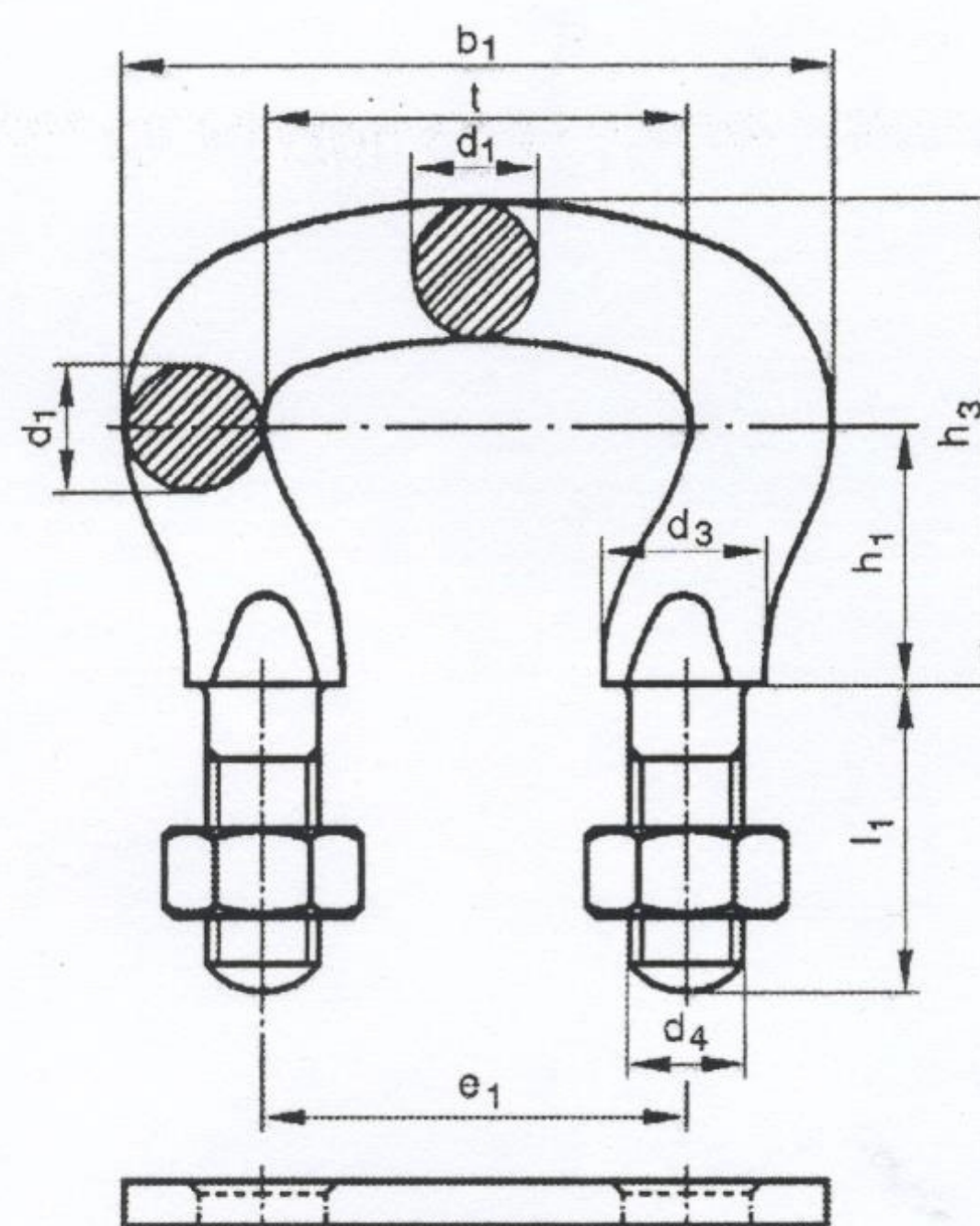
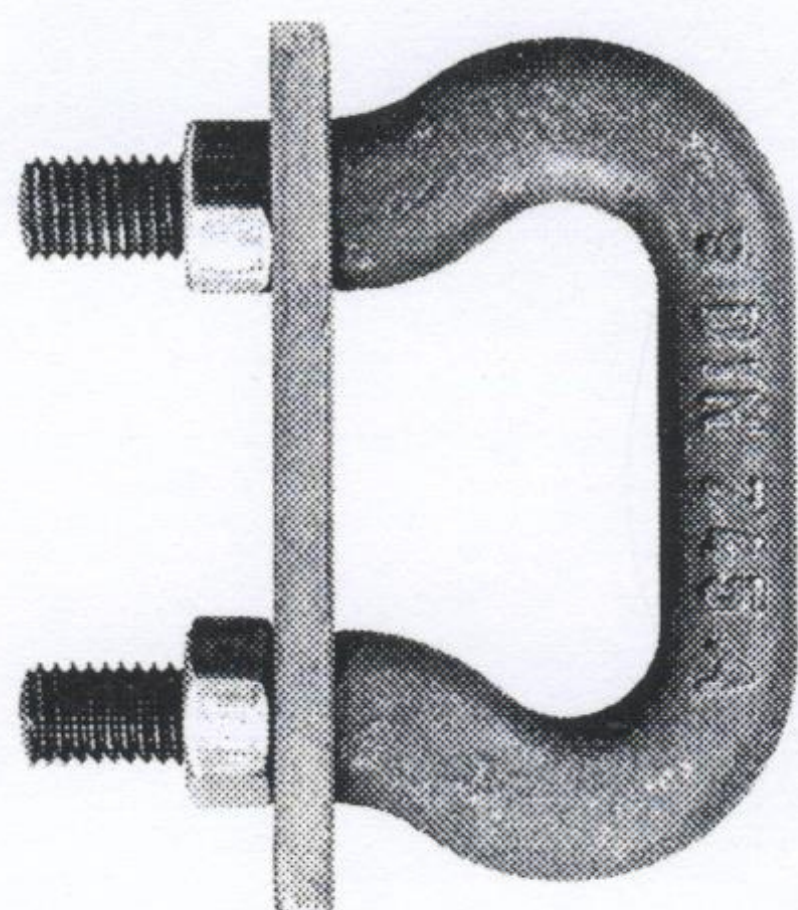


Zincir (dxt) Chain (dxt) mm	Zincir Geniřlięi Chain Width (mm)		Test Y¼k¼ Proof Load (kN)	Kopma Y¼k¼ Breaking Load (kN)	Aęırlık Weight (kg/m)
	b1 min	b2 max			
Ø 10 x 35	14	36	32	50	2
Ø 13 x 45	18	47	53	85	3,5
Ø 16 x 56	22	58	80	125	5,2
Ø 18 x 63	24	65	100	160	6,5
Ø 20 x 70	27	72	125	200	8,2
Ø 23 x 80	31	83	170	265	11
Ø 26 x 91	35	94	212	340	14
Ø 28 x 98	36	101	250	400	16,5
Ø 30 x 105	39	108	280	450	19
Ø 33 x 115	43	119	335	530	22.5

CHAIN SHACKLE

DIN 745 AND DIN 5699



Chain shackle DIN 5699
Distance plate

pitch								applicable chain ends for wheels		weight with 2 nuts
$t = e_1$ mm	b_1 mm	d_1 mm	d_3 mm	d_4 mm	h_1 mm	h_3 mm	l_1 mm	plain DIN 764/766 d mm	toothed DIN 764 d mm	kg/pc.
45	73/75	11,5/13	15/17	M10/M12	20/28	40/53	25/30	10/13	13	0,26
56	92	15/16	19	M12/M14	25/34	50/64	32/35	13/16	16	0,34
63	105	18	23	M16	30/37	60/71	40	16/18	18	0,60
70	116	20	28	M20	34/42	68/80	45	18/20	20	0,87
80	132	23	31	M20	37/47	74/89	45	20/23	23	1,12
91	149	26	34	M24	43/52	86/99	55	23/26	26	1,86
105	173	30	38	M24	50/60	100/114	55	26/30	30	2,56
126	206	36	44	M30	59/71	118/134	70/65	30/-	36	4,40
136	224	39	50	M36	76	146	75	36/-	39	6,30
147	239/241	42	50	M30/M36	68/81	136/157	70/75	39/-	42	7,30

All statements are not binding, technical alterations subject to change.

FOR CONVEYING OF

Cement, sand, stones, gravel, asphalt, coarse-grained materials, heavy-wearing materials, hot materials

FOR USE AT

Cement industry, stones and earths industry, asphalt mixing plants, lime- and gypsum industry, grit treatment, recycling plants

MATERIAL

C 45 heat-treated and additionally hardened in the interlink areas, hardening depth $0,1 \times d$, surface hardness min. 600 HV 10
Special steel (42 CrMo 4 oder 15 CrNi 6) available on request

DESIGN

black or oiled
without or with 2(S) or 4 nuts DIN 934 without or with distance plate (L) DIN 745 or DIN 5699



Paul Hedfeld GmbH
Hundeicker Str. 20
D-58285 Gevelsberg

Telefon +49 (0) 2332 63 71
Fax +49 (0) 2332 6 11 67

www.hedfeld.com
hedfeld@hedfeld.com